



# Cyclin E1 (Phospho Ser399) Rabbit pAb

<b>Catalog No</b>	YP-Ab-17650
<b>Isotype</b>	IgG
<b>Reactivity</b>	Human, Mouse, Rat
<b>Applications</b>	IHC, WB
<b>Gene Name</b>	CCNE1 CCNE
<b>Protein Name</b>	G1/S-specific cyclin-E1
<b>Immunogen</b>	Synthesized peptide derived from human Cyclin E1 (Phospho Ser399)
<b>Specificity</b>	This antibody detects endogenous levels of Cyclin E1 (Phospho Ser399) Rabbit pAb at Human, Mouse, Rat
<b>Formulation</b>	Liquid in PBS containing 50% glycerol, and 0.02% sodium azide.
<b>Source</b>	Rabbit, polyclonal
<b>Purification</b>	The antibody was affinity-purified from rabbit serum by affinity-chromatography using specific immunogen.
<b>Dilution</b>	WB 1:500-2000 IHC 1:50-200
<b>Concentration</b>	1 mg/ml
<b>Purity</b>	≥90%
<b>Storage Stability</b>	-20°C/1 year
<b>Synonyms</b>	G1/S-specific cyclin-E1
<b>Observed Band</b>	49kD
<b>Cell Pathway</b>	Nucleus .
<b>Tissue Specificity</b>	Highly expressed in testis and placenta. Low levels in bronchial epithelial cells.
<b>Function</b>	function: Essential for the control of the cell cycle at the G1/S (start) transition., PTM: Phosphorylation of Thr-395 by GSK3 and of Ser-399 by CDK2 accelerates degradation via the ubiquitin proteasome pathway. Phosphorylated upon DNA damage, probably by ATM or ATR., similarity: Belongs to the cyclin family. Cyclin E subfamily., subunit: Interacts with a member of the CDK2/CDK protein kinases to form a serine/threonine kinase holoenzyme complex. The cyclin subunit imparts substrate specificity to the complex. Interacts with retinoblastoma binding protein 3 and retinoblastoma-like protein 1. Found in a complex with CDK2, CABLES1 and CCNA1 (By similarity). Part of a complex consisting of UHRF2, CDK2 and CCNE1., tissue specificity: Highly expressed in testis and placenta. Low levels in bronchial epithelial cells.,
<b>Background</b>	cyclin E1(CCNE1) Homo sapiens The protein encoded by this gene belongs to the highly conserved cyclin family, whose members are characterized by a dramatic periodicity in protein abundance through the cell cycle. Cyclins function as regulators of CDK kinases. Different cyclins exhibit distinct expression



and degradation patterns which contribute to the temporal coordination of each mitotic event. This cyclin forms a complex with and functions as a regulatory subunit of CDK2, whose activity is required for cell cycle G1/S transition. This protein accumulates at the G1-S phase boundary and is degraded as cells progress through S phase. Overexpression of this gene has been observed in many tumors, which results in chromosome instability, and thus may contribute to tumorigenesis. This protein was found to associate with, and be involved in, the phosphorylation of NPAT protein (nuclear protein mapped to the ATM locus), which participates in

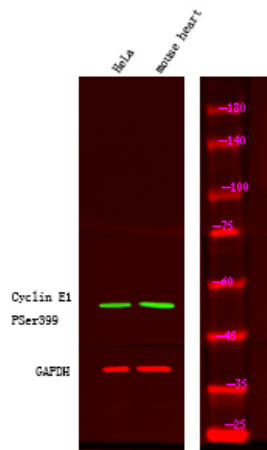
#### matters needing attention

Avoid repeated freezing and thawing!

#### Usage suggestions

This product can be used in immunological reaction related experiments. For more information, please consult technical personnel.

## Products Images



Western Blot analysis of HeLa mouse heart using primary antibody at 1:1000 dilution 4°C, overnight. Secondary antibody(catalog#:RS23920) was diluted at 1:10000 25°C, 1.5hours